

LOOK FOR THE FEBRUARY ISSUE OF

Pulse

FEATURING:

**RHEUMATOLOGY PHYSICIANS
OF WATERBURY HOSPITAL**

Pulse

DEC 2009/JAN 2010

THE MEDICAL STAFF NEWSLETTER OF WATERBURY HOSPITAL

William Becker, MD, who joined the staff at Waterbury Hospital in 2009 as an attending physician, makes medical rounds on a hospital floor with members of the inpatient medical team as they discuss the previous night's admissions.

Welcome and Thank You 2009 NEW PHYSICIANS



A MESSAGE FROM

STEVEN E. SCHNEIDER, MD

Vice President of Medical Affairs

In years to come, 2009 will be looked back on as a challenging year for the Waterbury Hospital community, a year when the demands of an economic recession and the changing face of health care required sacrifices of everyone associated with our institution. But despite all that, the hospital still needed to fulfill its most vital mission of providing the highest quality care to our patients, which is why we were fortunate to see a host of highly skilled and dedicated physicians joining our ranks.

Continued on page 2



Welcome and Thank You 2009 NEW PHYSICIANS

Continued from page 1

These new physicians, who are featured here in our annual New Doctors issue, were instrumental in not only making sure we stayed true to that mission, but also in helping us weather the storms of the past year in good stead. As we embark on a new year, the hospital stands on much more solid financial footing, and we are grateful to the medical staff and the entire hospital community for doing what it took to help us get to this point. Because of all your efforts, we are optimistic that Waterbury Hospital will continue its role as a vital presence in the life of our community for years to come.

Welcome, then, to the new physicians of 2009, who bring their talents and energies to our hospital from points across the world. Whether they work on our staff as part of our

growing hospitalist program, or have had their private practices affiliated with us, we want our new physicians to know we appreciate their already significant contributions.

It is our hope that this issue will help all of our medical staff familiarize themselves with the new faces and names they may encounter in the course of their professional travels. We hope it will serve as an icebreaker of sorts as we continue to carry out the hospital's mission in 2010. In the meantime, I wish you all a warm and happy and safe holiday season.



Steven E. Schneider, MD
Vice President of Medical Affairs

Thank You to Our Project Access Physicians

Project Access is an efficient, coordinated system helping to increase access to quality health care for the low-income and uninsured population of the Greater Waterbury Area. Through Project Access, volunteer physicians and other health care providers are able to donate care to the uninsured in a way that is organized, equitable and safe. Patients in Project Access are also assigned a case manager to assist with access to medications, hospitalizations, lab testing, diagnostic imaging and other ancillary services. To date, the Waterbury Project Access program has over 200 participating community and hospital-based physicians, including 15 specialties. Through their efforts, Project Access has been able to donate free care valued at \$1.8 million dollars.

It is with sincere thanks that we recognize the efforts of our community providers, without which the success of Project Access would not be possible.

**In particular, we would like to thank the physicians who founded
Waterbury Project Access in 2005:**

**Kevin Carr, MD
Peter Ellis, MD
David Podell, MD
Henry Gift, MD**

**Drew Edwards, MD
Craig Czarsty, MD
O.J. Bizzozero, MD**

Together, we have begun to achieve a local solution to a growing national problem.

New Faces, Great Talent

Waterbury Hospital was extremely fortunate to draw on the diverse talents and skills of the new physicians who joined our medical staff in 2009. Despite the challenges of an economic recession and growing strains on the health care system, our hospital was able to maintain its commitment of high quality care to patients, thanks in large part to the members of our medical staff. Here are the new faces who joined the hospital over the past year.



Ann M. Asunto, MD

Family Care

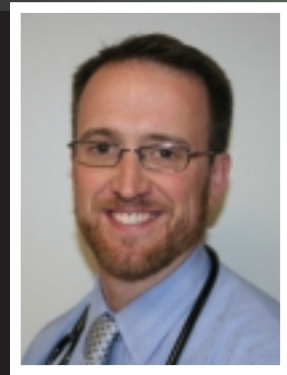
Medical School: Cebu Institute of Medicine, Philippines
Residency: Bryn Mawr Hospital, Pennsylvania
Practice: StayWell Health Center, Inc.
Phone: 203-756-8021



Gilbert R. Balatbat, MD

Anesthesiology

Medical School: University of The Philippines
Residency: University of Connecticut School of Medicine
Fellowship: Interventional Pain Management, University of Massachusetts School of Medicine
Practice: Waterbury Anesthesiology Associates
Phone: (203) 573-6124
Personal: Dr. Balatbat is married with two children; he enjoys target shooting.



William Becker, MD

Internal Medicine

Medical School: Temple University, Philadelphia

Residency: Yale Primary Care Program

Fellowship: General Internal Medicine, Yale University

Practice: Waterbury Hospital

Phone: (203) 573-7667

Personal: Dr. Becker is married and has one son. He enjoys hiking, listening to music, biking and baseball.



Maria Cardenas, MD

Endocrinology

Medical School: Rush Medical College, Chicago

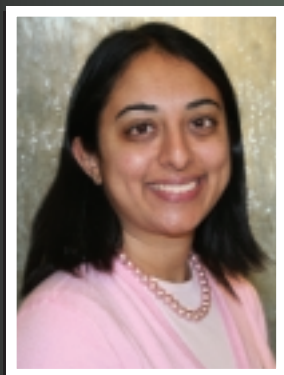
Residency: Yale Primary Care Program

Fellowship: Endocrine at Oregon Health and Science University

Practice: Alliance Medical Group

Phone: (203) 758-1004

Personal: Dr. Cardenas enjoys taking outdoor walks.



Jessica Chaudhary, MD

Behavioral Health

Medical School: University of Washington School of Medicine

Residency: Yale University School of Medicine

Practice: Waterbury Hospital

Phone: (203) 573-6500

Personal: Dr. Chaudhary enjoys traveling, reading, playing tennis and keeping up with current events.



Justin Cheesman, MD

Emergency Medicine

Medical School: Georgetown University School of Medicine

Residency: University of Connecticut Medical Center

Practice: Waterbury Hospital

Phone: (203) 573-6205

Personal: Dr. Cheesman enjoys tennis, skiing, sailing, boating and snowboarding.



Tamer Ghaly, MD

Interventional Pain Management

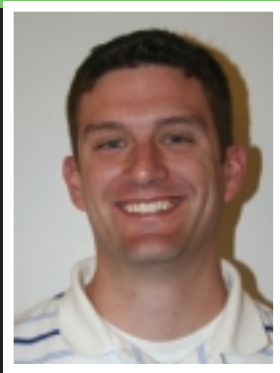
Medical School: Cairo University School of Medicine
Residency: Brookdale Hospital Brooklyn (Anesthesiology)
Fellowship: University of Pittsburgh Medical Center (Pain Management)
Practice: Neurosurgery, Orthopaedics and Spine Specialists, P.C. (NOSS)
Phone: 203-755-6677
Personal: Dr. Ghaly enjoys swimming and playing soccer and tennis in his spare time.



Nathan A. Kruger, MD

Cardiology

Medical School: New York Medical College
Residency: Yale-New Haven Hospital
Fellowship: Congestive Heart Failure and Transplantation at Yale-New Haven Hospital, and a Cardiology Fellow at Albert Einstein College of Medicine/Montefiore Medical Center.
Practice: Quality Cardiovascular Care, Waterbury
Phone: (203) 591-1998
Personal: Dr. Kruger has two children and enjoys hiking and restoring antique automobiles.



Kevin Gentile, DO

Emergency Medicine

Medical School: Lake Erie College of Oteopathic Medicine
Residency: Baystate Medical Center
Practice: Waterbury Hospital
Phone: (203) 573-6205
Personal: Dr. Gentile is married.



Hamal Lal, MD

Internal Medicine, Hospitalist Medicine

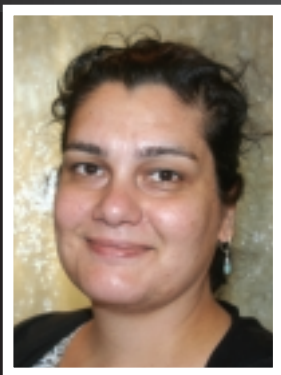
Medical School: University College of Medical Sciences

Residency: SUNY Downstate Medical Center

Practice: Waterbury Hospital

Phone: (203) 573-6263

Personal: Dr. Lal is married and has one child. He enjoys movies and reading.



Nandini Lee, MD

Behavioral Health

Medical School: St. George's University School of Medicine, Grenada

Residency: University of Connecticut

Practice: Waterbury Hospital

Phone: (203) 573-6500

Personal: Dr. Lee enjoys mountain biking.



Brian Lyngaas, MD

Emergency Medicine

Medical School: Loyola School of Medicine

Residency: Baystate Medical Center

Practice: Waterbury Hospital

Phone: (203) 573-6205

Personal: Dr. Lyngaas is married.



Joycelyn Maw, MD

Internal Medicine

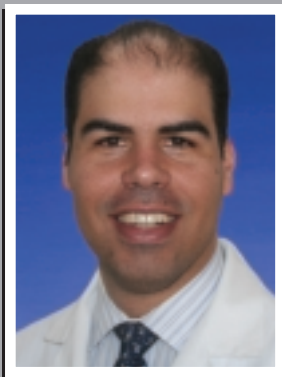
Medical School: New York Medical College

Residency: University of Iowa

Practice: Alliance Medical Group

Phone: (203) 758-8107

Personal: Dr. Maw enjoys cooking, running, playing tennis and reading.



Ernesto R. Montesino, MD

Infectious Diseases

Medical School: Pontificia Universidad Catolica Madre y Maestra,
Dominican Republic

Residency: Wayne State University, Detroit

Fellowship: Infectious Diseases, Yale-New Haven Hospital

Practice: Waterbury Hospital

Phone: (203) 573-7229

Personal: Dr. Montesino is single and enjoys biking.



Swapna Omraju, MD

Internal Medicine

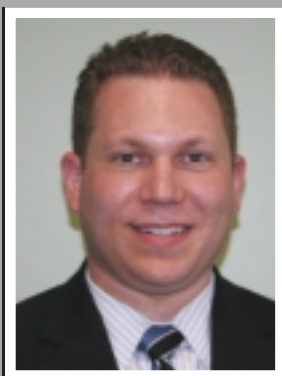
Medical School: Rajah Muthiah Medical College, India

Residency: Brooklyn Hospital Center, New York

Practice: Associated Physicians of Southbury, PC

Telephone: (203) 266-5202

Personal: Dr. Omraju is married with a son. She and her family enjoy traveling.



Lee Eric Rubin, MD

Orthopaedics

Medical School: Tufts University School of Medicine

Residency: Yale-New Haven Hospital

Fellowship: Keggí Orthopaedic Foundation

Practice: Orthopaedics New England, PC, Middlebury, CT

Phone: (203) 598-0700

Personal: Dr. Rubin is married with a three-month-old daughter. He enjoys bicycling.



Anthony N. Schore, MD

Gastroenterology

Medical School: SUNY Downstate

Residency: Tufts-New England Medical Center

Fellowship: Mayo Clinic, Jacksonville, FL

Practice: Naugatuck Valley GI Consultants, LLC

Phone: (203) 756-6422

Personal: Dr. Schore is married with two children. He enjoys the outdoors, traveling and music.

New Faces, Great Talent

Pulse
NEW PHYSICIANS 2009



Mary L. Zozulin, MD

Obstetrics/Gynecology

Medical School: Medical University of South Carolina

Residency: Keesler Air Force Base Medical Center, Biloxi, MS

Practice: Center for Women's Health, PC, Waterbury CT

Phone: (203) 754-5129

Personal: Dr. Zozulin is married with two children.



Find us on
Facebook

Become a "fan" of
Waterbury Hospital

Pulse

is published monthly by the Public Relations/ Marketing Department at Waterbury Hospital

MANAGING EDITOR: HEATHER TINDALL **ASSISTANT EDITOR: MATT BURGARD**

For comments, questions and suggestions, please contact
Heather Tindall at (203) 573-6717 or htindall@wtbyhosp.org

64 Robbins Street
Waterbury, CT 06708

**WATERBURY
HOSPITAL**

